

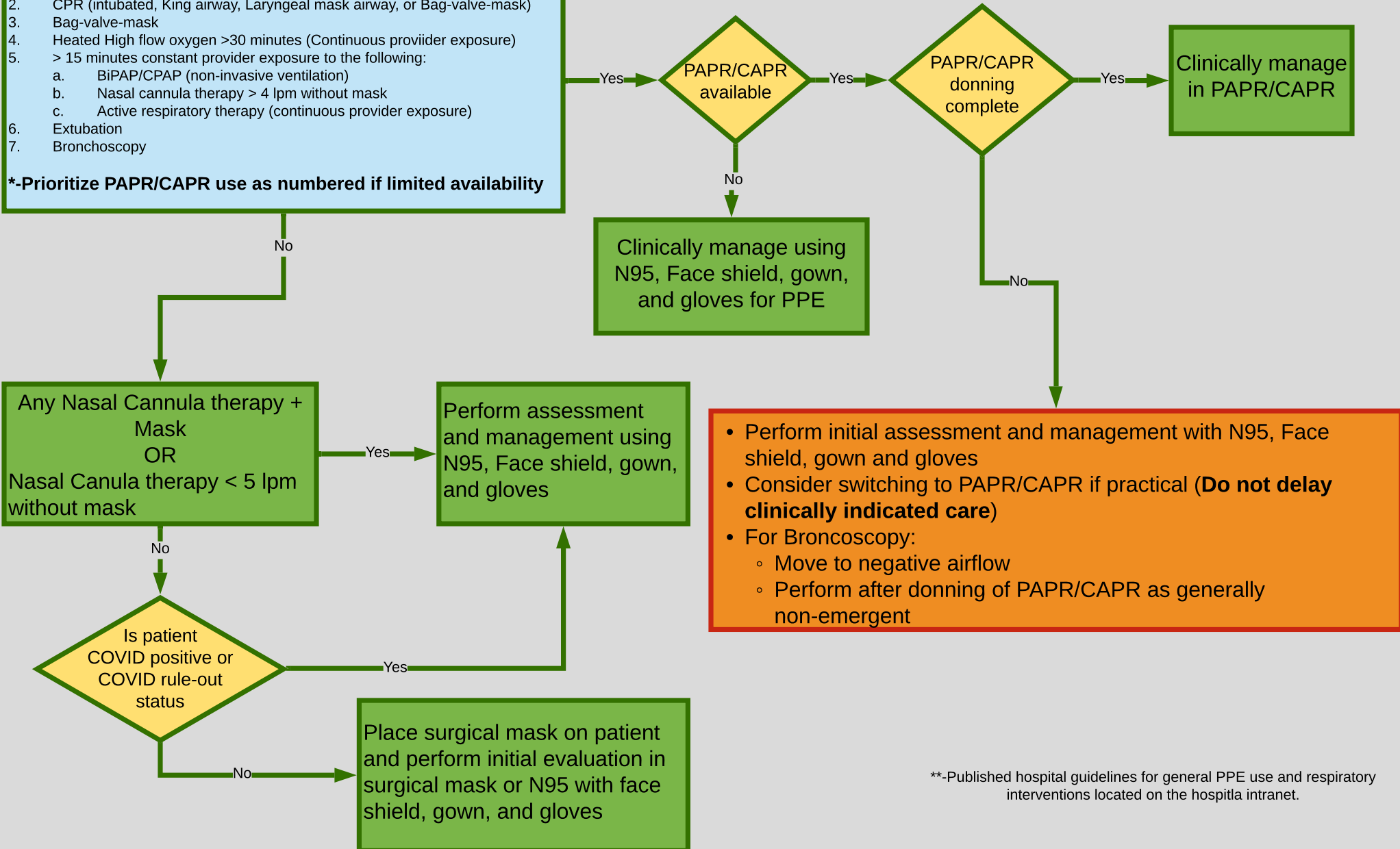
**Emergency Department PPE for providers during COVID pandemic\*\***

- Standard PPE for the below Procedures includes Gown, Gloves + N95, Face Shield
- Reminder: N-95 and Faceshield is our standard level of PPE and will keep you safe. Using a PAPR is an acceptable alternative when available and is prioritized by the likelihood of aerosol generation.
- Patient care should NEVER be delayed because a PAPR is not available.

**Aerosolizing Interventions\***

1. Intubation
2. CPR (intubated, King airway, Laryngeal mask airway, or Bag-valve-mask)
3. Bag-valve-mask
4. Heated High flow oxygen >30 minutes (Continuous provider exposure)
5. > 15 minutes constant provider exposure to the following:
  - a. BiPAP/CPAP (non-invasive ventilation)
  - b. Nasal cannula therapy > 4 lpm without mask
  - c. Active respiratory therapy (continuous provider exposure)
6. Extubation
7. Bronchoscopy

**\*-Prioritize PAPR/CAPR use as numbered if limited availability**



\*\* -Published hospital guidelines for general PPE use and respiratory interventions located on the hospital intranet.